



ALM05

3" DIGITAL HMI



- HMI designed for control applications
- CAN BUS or SERIAL network
- Display and up to 4 toggle switches and a side button for custom applications
- Dry contacts emergency button
- Customizable graphics

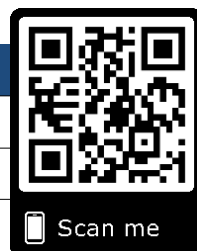


TECHNICAL DATA

CODE	ALM05	
POWER SUPPLY	9 ÷ 36 VDC / 20 mA CURRENT ABSORPTION AT 24 VDC (STAND BY MODE)	
SWITCH / BUTTON	TOTAL 9	Up to no. 4 2/3 POSITIONS TOGGLE SWITCHES No. 3 KEYS ON THE BACK Up to no. 2 SIDE BUTTON ON THE LEFT/RIGHT No. 1 EMERGENCY BUTTON
LED	TOTAL 8	No. 4 BICOLOR PROGRAMMABLE LEDES No. 4 STATUS LEDES / BACKLIGHT ON TOGGLE SWITCHES
CAN BUS	2 PORTS	2.0 A/B COMPLIANT - (11, 29 BIT) - ISO 11898 - UP TO 1MBIT/S
CAN BUS PROTOCOLS	CAN OPEN (CIA DS401 DEVICE PROFILE FOR GENERIC I/O MODULE, WITH DS306 EDS FILE) ON REQUEST: SAE J1939	
SERIAL	1 PORT	OPTIONAL: RS232 UP TO 115200 BAUD
DISPLAY	LCD TYPE: MONOCROMATIC FSTN (WHITE ON BLUE BACKLIGHT) DOT MATRIX: 240 X 120 DOTS VISUAL AREA: 72.0 (W) X 37.0 (H) mm	
CONNECTIONS	1	M12 8PIN MALE A-CODED CONNECTOR (SEE ELECTRICAL CONNECTIONS TABLE) ON REQUEST: WIRED CONNECTION OR CUSTOMIZABLE CONNECTOR
WORKING TEMPERATURE	-20°C +70°C	
EMERGENCY STOP BUTTON	35 VDC; 2 A	

ELECTRONIC FEATURES

SLAVE USAGE	EDS FILE
PROGRAMMING	FIRMWARE UPLOAD BY CAN BUS WITH ALOADER SOFTWARE TOOL
CYCLE TIME	5 ms



(20/02/2026) - 1



ALM05

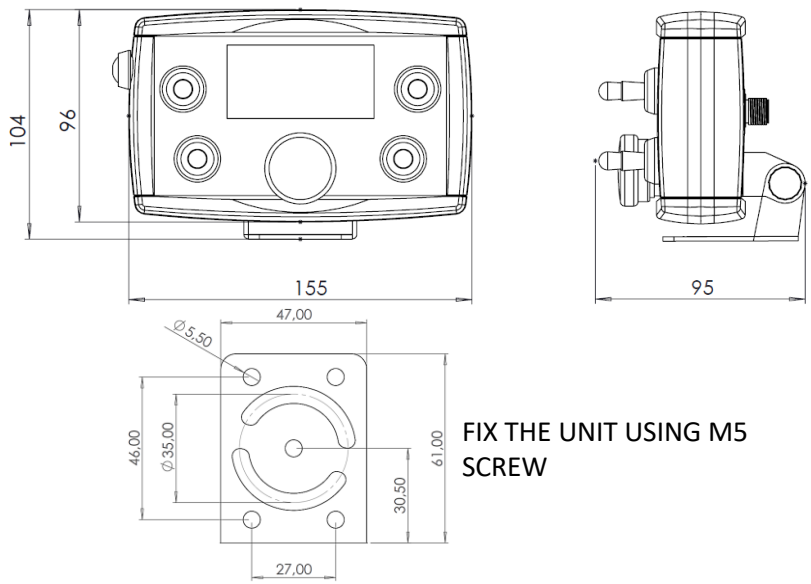
3" DIGITAL HMI

STANDARDS

ELECTROMAGNETIC EMISSIONS	EN 61000-6-4// EN 55011 (RF RADIATE)
ELECTROMAGNETIC IMMUNITY	EN 61000-6-2// EN 61000-4-2/3/4/6
EMEGENCY STOP BUTTON	EN60947-5-1 EN60947-5-5 (manufacturer's specification)

IN ACCORDANCE WITH THE EN50498 THE DEVICE MEETS THE TECHNICAL SPECIFIC REQUIREMENTS OF 2004-104 DIRECTIVE (AUTOMOTIVE). THE DEVICE IS EMC 2004/108 COMPLIANT.

SIZE (mm)

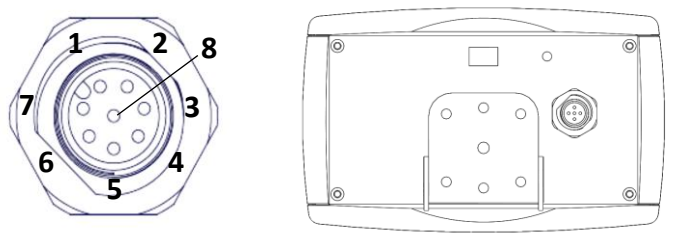


FIX THE UNIT USING M5 SCREW

ELECTRICAL CONNECTION

CONNECTOR PINOUT

1	POSITIVE POWER SUPPLY
2	CAN2 H (OPTIONAL)
3	CAN H
4	CAN2 L (OPTIONAL)
5	NEGATIVE POWER SUPPLY
6	NC EMERGENCY-STOP DRY CONTACT
7	CAN L
8	NC EMERGENCY-STOP DRY CONTACT





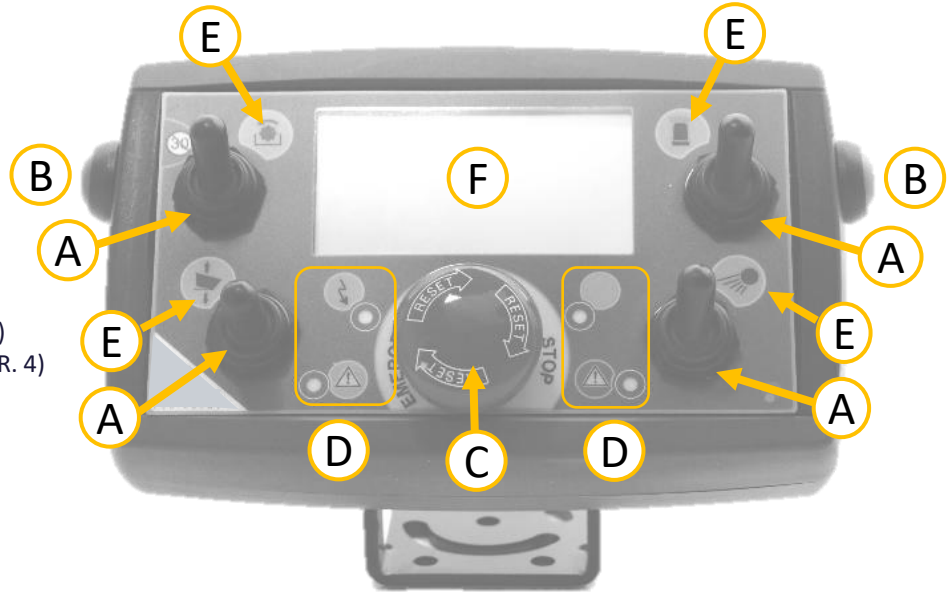
ALM05

3" DIGITAL HMI

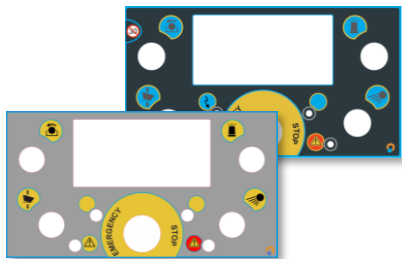
CONNECTIONS

DEVICE CONFIGURATION

- A. TOOGLE SWITCHES
- B. SIDE BUTTONS
- C. EMERGENCY STOP BUTTON
- D. PROGRAMMABLE BICOLOR LEDS (NR. 4)
- E. SWITCHES STATUS/BACKLIGHT LEDS (NR. 4)
- F. GRAPHIC DISPLAY



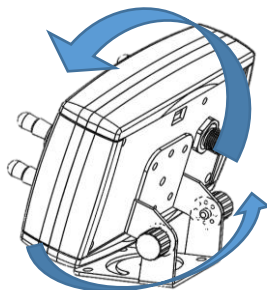
CUSTOMIZABLE GRAPHIC LABEL



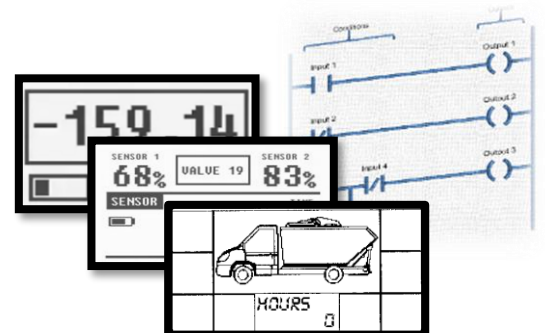
MEMBRANE KEYBOARD ON THE BACK



ADJUSTABLE ROTATION AND INCLINATION



CUSTOMIZABLE GRAPHIC DISPLAY and WORKING LOGIC





NOTE