



ALNW

CAN BUS PUSHBUTTON



- Light and rugged pushbutton
- Designed for machines and equipment equipped with a CAN BUS or SERIAL network.
- Emergency button with dry contacts,
- 16-keys keypad with a backlight and integrated spotlight led.
- Up to 3 side button.
- customizable keyboard graphic

TECHNICAL DATA

MASTER CODE	ALNW
POWER SUPPLY	9-30 VDC / CURRENT ABSORPTION 8,5mA @ 24VDC (STAND BY MODE)
BUTTONS	New N. 16 FRONTAL KEYS (WITH HIGH POWER INTEGRATED BACKLIGHT AND SPOTLIGHT) UP TO 2 LEFT SIDE BUTTONS (OPTIONAL) UP TO 1 RIGHT SIDE BUTTON (OPTIONAL) N. 1 EMERGENCY STOP BUTTON
LED	N. 16 PROGRAMMABLE SPOTLIGHT LEDS (PUSHBUTTONS INTEGRATED) New N. 1 POWER SUPPLY STATUS New N.3 STATUS LED (GREEN & RED BICOLOR) New RAMP DISPLAY LED (OPTIONAL)
BUZZER	New YES (low dB)
NETWORK FEATURES	CAN BUS PORT 2.0B COMPLIANT - (11, 29 BIT) - ISO 11898 - UP TO 1MBIT/S - PROTOCOLS: CAN OPEN (CiA DS401 DEVICE PROFILE FOR GENERIC I/O MODULE, WITH DS306 EDS FILE) SERIAL PORT (OPTIONAL): RS232 / 422 / 485
CONNECTIONS	SPIRAL CABLE WITH RUGGED CONNECTOR (see page 2 for options)
WORKING TEMPERATURE	-20°C +60°C

STANDARDS

ELECTROMAGNETIC (EMC)	ACCORDING TO DIRECTIVE 2014/30/EU: EN 61000-6-4 EN 61000-6-2 EN 50498
EMERGENCY STOP BUTTON (manufacturer's specification)	EN60947-5-1 EN60947-5-5

ACCORDING WITH THE EN50498 THE DEVICE MEETS THE TECHNICAL SPECIFIC REQUIREMENTS OF 2004-104 DIRECTIVE (AUTOMOTIVE).



Scan me

(20/02/2026) - 1



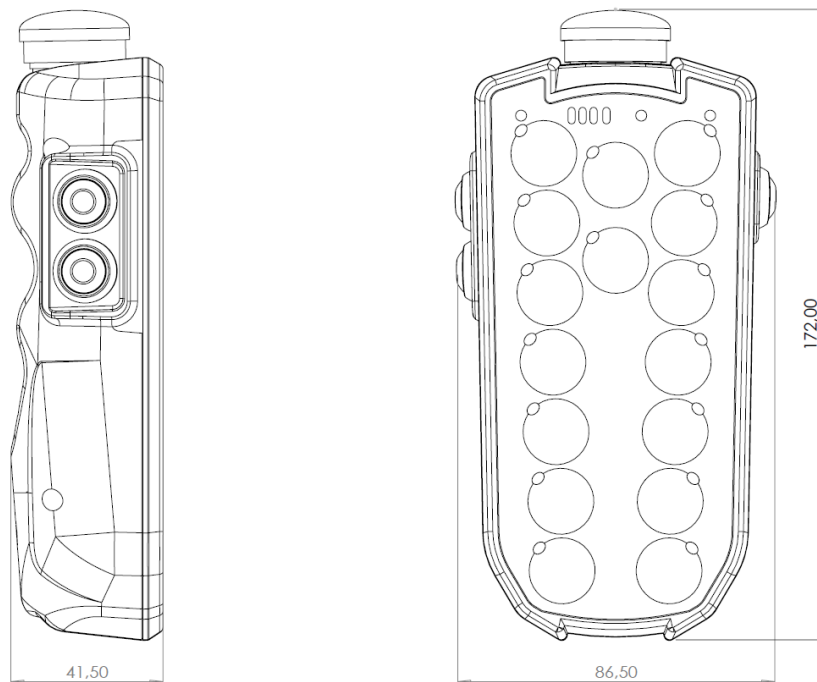
ALNW

CAN BUS PUSHBUTTON

ELECTRONIC AND ELECTRICAL FEATURES

SLAVE USAGE	EDS FILE
PROGRAMMING	FIRMWARE UPLOAD BY CAN BUS WITH ALOADER SOFTWARE TOOL
EMERGENCY STOP BUTTON	MAX 35 VDC; 2 A

SIZE (mm)



STATUS BAR





ALNW

CAN BUS PUSHBUTTON

CONNECTIONS

SPIRAL CABLE STANDARD LENGHT = 0,80 m (EXTENDED L = 2m)
Optional: SPIRAL CABLE LENGHT = 1,05 m (EXTENDED L = 3,5m)

AMP SUPERSEAL 6 PIN CONNECTOR

CONNECTION PINOUT – CAN BUS NETWORK	
PIN	DESCRIPTION
1	POSITIVE POWER SUPPLY
2	CAN H
3	NEGATIVE POWER SUPPLY
4	CAN L
5	EMERGENCY BUTTON DRY CONTACT
6	EMERGENCY BUTTON DRY CONTACT



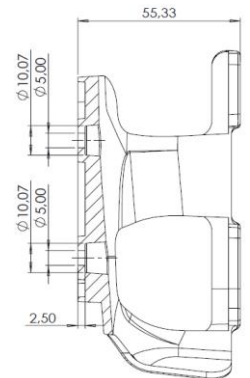
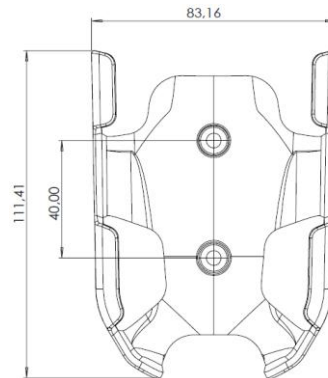
UTG6128PN SOURIAU CONNECTOR

CONNECTION PINOUT – CAN BUS NETWORK	
PIN	DESCRIPTION
A	POSITIVE POWER SUPPLY
B	NEGATIVE POWER SUPPLY
C	CAN H
D	CAN L
E	EMERGENCY BUTTON DRY CONTACT
F	EMERGENCY BUTTON DRY CONTACT

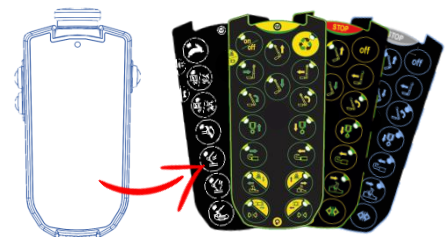


FEATURES

MOUNTING BRACKET

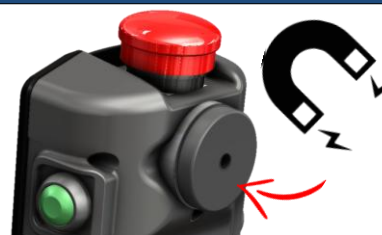


CUSTOMIZABLE KEYBOARD GRAPHIC



OPTIONAL

INTEGRATED MAGNETIC BRACKET





NOTE