



ALNWR

DIGITAL RADIO PUSHBUTTON



- Pushbutton designed for remote control applications of machines equipped with RDC EVO radio receiver
- 16 keys keypad with a backlight and integrated spotlight led
- Up to 3 side buttons for custom applications
- Emergency button for safety functions
- Customizable keyboard graphic
- Hamming security code for continuous work without interruptions on 434 or 868 MHz band

TECHNICAL DATA

MASTER CODE ALNWR

POWER SUPPLY 3.7V 2000 mAh Li-ion INTEGRATED BATTERY

BUTTONS
New N. 16 FRONTAL KEYS (WITH *HIGH POWER* INTEGRATED BACKLIGHT AND SPOTLIGHT)
New UP TO 2 LEFT SIDE BUTTONS (OPTIONAL)
UP TO 1 RIGHT SIDE BUTTON (OPTIONAL)
N. 1 EMERGENCY STOP BUTTON

LED
N. 16 PROGRAMMABLE SPOTLIGHT LEDS (PUSHBUTTONS INTEGRATED)
New N.3 STATUS LED (GREEN & RED BICOLOR)
New BATTERY STATUS LED (100-70% - 69-30% - <29%)
New CHARGING LED (Red: in charge – green: charging complete)

RADIO FEATURES
BAND: 868 MHz (869.700-870.00 MHz) / 434 MHz (433.050-434.790 MHz)
CHANNELS: 12 (AUTOMATIC FREQUENCY SCAN)
MODULATION: 2-GFSK
ANTENNA: INTEGRATED

RADIO PROTOCOL
PACKET TRANSMISSION PROTOCOL
BIDIRECTIONAL LINK
HAMMING DISTANCE = 4
SAFETY STOP INTERVENTION TIME < 0,5s

AUTONOMY UP TO 24 HOURS IN CONTINUOUS TRANSMISSION

RECHARGE **New** 7 HOURS (MAX)

CONNECTIONS
INTEGRATED BATTERY CHARGER CONNECTOR (9÷36 VDC FROM EXTERNAL POWER SOURCE @ 0÷40°C)
New OPTIONAL: USB TYPE C – FOR BATTERY CHARGING (FAST CHARGE)

WORKING TEMPERATURE -20°C ÷ +60°C



(29/08/2025) - 1



ALNWR

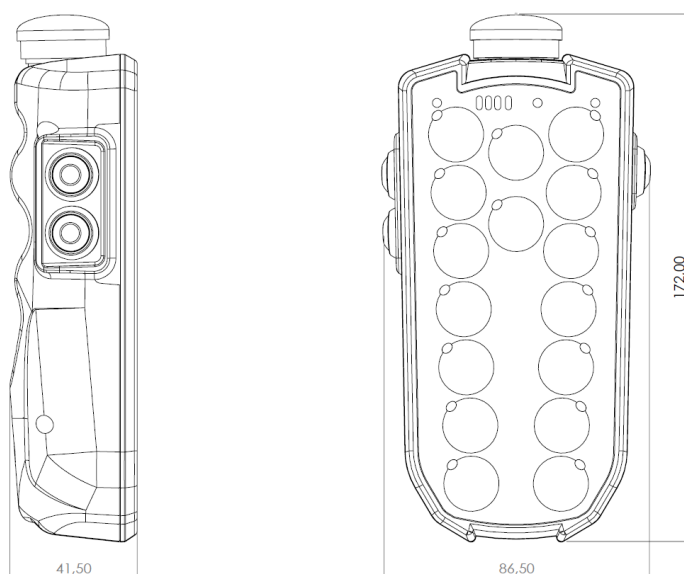
DIGITAL RADIO PUSHBUTTON

ELECTRONIC FEATURES

ELECTROMAGNETIC (EMC)	ACCORDING TO DIRECTIVE 2014/30/EU:
	EN 61000-6-4
	EN 61000-6-2
	EN 50498
INFORMATION TECHNOLOGY EQUIPMENT – SAFETY	EN 60950-1
RADIO SPECTRUM MATTERS (RED)	ACCORDING TO DIRECTIVE 2014/53/EU:
	ETSI EN 300.220-1
	ETSI EN 300.220-2
	ETSI EN 301.489-1
	ETSI EN 301.489-3
EMERGENCY STOP BUTTON (manufacturer's specification)	EN60947-5-1
	EN60947-5-5

ACCORDING WITH THE EN50498 THE DEVICE MEETS THE TECHNICAL SPECIFIC REQUIREMENTS OF 2004-104 DIRECTIVE (AUTOMOTIVE).

SIZE (mm)



STATUS BAR

Device battery charge is available by the 3 color LED display located in the front area.



BICOLOR STATUS LED
Custom application use

SPOTLIGHT LED
Integrated on each key

BACKLIGHT
Integrated on each key



The status of the battery in charge is indicated by the dedicated bicolor led

PUSHBUTTON STATUS LED
Radio communication status, diagnose and emergency stop button feedback

BICOLOR STATUS LED
Custom application use

CUSTOMIZABLE GRAPHIC
Pictograms, colors and company logo

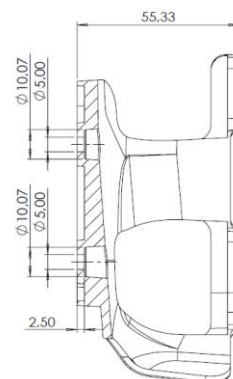
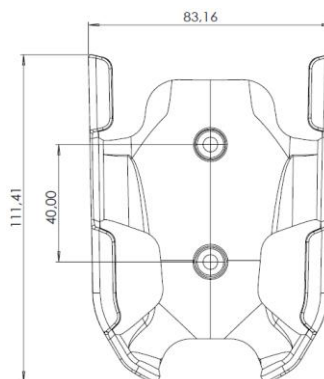


ALNWR

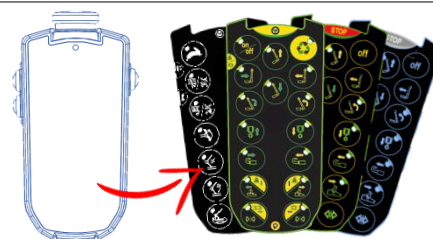
DIGITAL RADIO PUSHBUTTON

FEATURES

MOUNTING BRACKET



CUSTOMIZABLE KEYBOARD GRAPHIC



OPTIONAL

INTEGRATED MAGNETIC BRACKET



FAUX LEATHER CASE

With rear spring clips for belt attachment and lid with Velcro closure for quick withdrawal.

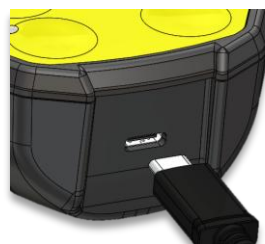


USB TYPE C (5 VDC) BATTERY CHARGER

with USB-A cable included
For universal USB charger

OPTIONAL:

- 220/230 VAC plug adapter
- 12 VDC Lighter socket charger



USB TYPE-C
connector

Compatible with
universal smartphone
/ tablet / power-bank
charger

RADIO KIT READY TO USE

See the dedicated datasheet on almec.net

ALNWR
RADIO TRANSMITTER



RDC EVO
RADIO RECEIVER





NOTE