



ALNWR

DIGITAL RADIO PUSHBUTTON



- Pushbutton designed for remote control applications of machines equipped with RDC EVO radio receiver
- 16 keys keypad with a backlight and integrated spotlight led
- Up to 3 side buttons for custom applications
- Emergency button for safety functions
- Customizable keyboard graphic
- Hamming security code for continuous work without interruptions on 434 or 868 MHz band

#### TECHNICAL DATA

**MASTER CODE** ALNWR

**POWER SUPPLY** 3.7V 2000 mAh Li-ion INTEGRATED BATTERY

**BUTTONS**  
**New** N. 16 FRONTAL KEYS (WITH *HIGH POWER* INTEGRATED BACKLIGHT AND SPOTLIGHT)  
**New** UP TO 2 LEFT SIDE BUTTONS (OPTIONAL)  
UP TO 1 RIGHT SIDE BUTTON (OPTIONAL)  
N. 1 EMERGENCY STOP BUTTON

**LED**  
N. 16 PROGRAMMABLE SPOTLIGHT LEDS (PUSHBUTTONS INTEGRATED)  
**New** N.3 STATUS LED (GREEN & RED BICOLOR)  
**New** BATTERY STATUS LED (100-70% - 69-30% - <29%)  
**New** CHARGING LED (Red: in charge – green: charging complete)

**RADIO FEATURES**  
BAND: 868 MHz (869.700-870.00 MHz) / 434 MHz (433.050-434.790 MHz)  
CHANNELS: 12 ( AUTOMATIC FREQUENCY SCAN)  
MODULATION: 2-GFSK  
ANTENNA: INTEGRATED

**RADIO PROTOCOL**  
PACKET TRANSMISSION PROTOCOL  
BIDIRECTIONAL LINK  
HAMMING DISTANCE = 4  
SAFETY STOP INTERVENTION TIME < 0,5s

**AUTONOMY** UP TO 24 HOURS IN CONTINUOUS TRANSMISSION

**RECHARGE** **New** 7 HOURS (MAX)

**CONNECTIONS**  
INTEGRATED BATTERY CHARGER CONNECTOR (9÷36 VDC FROM EXTERNAL POWER SOURCE @ 0÷40°C)  
**New** OPTIONAL: USB TYPE C – FOR BATTERY CHARGING (FAST CHARGE)

**WORKING TEMPERATURE** -20°C +60°C



(25/06/2025) - 1



ALNWR

DIGITAL RADIO PUSHBUTTON

ELECTRONIC FEATURES

<b>ELECTROMAGNETIC (EMC)</b>	ACCORDING TO DIRECTIVE 2014/30/EU:
	EN 61000-6-4
	EN 61000-6-2
	EN 50498

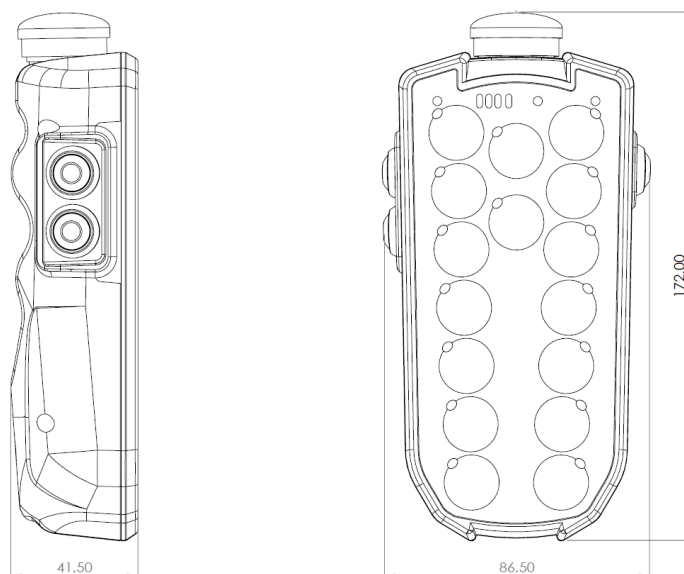
<b>INFORMATION TECHNOLOGY EQUIPMENT – SAFETY</b>	EN 60950-1
--	------------

<b>RADIO SPECTRUM MATTERS (RED)</b>	ACCORDING TO DIRECTIVE 2014/53/EU:
	ETSI EN 300.220-1
	ETSI EN 300.220-2
	ETSI EN 301.489-1
	ETSI EN 301.489-3

<b>EMERGENCY STOP BUTTON</b> (manufacturer's specification)	EN60947-5-1 EN60947-5-5
--	----------------------------

ACCORDING WITH THE EN50498 THE DEVICE MEETS THE TECHNICAL SPECIFIC REQUIREMENTS OF 2004-104 DIRECTIVE (AUTOMOTIVE).

SIZE (mm)



STATUS BAR

Device battery charge is available by the 3 color LED display located in the front area.



**BICOLOR STATUS LED**  
Custom application use

**SPOTLIGHT LED**  
Integrated on each key

**BACKLIGHT**  
Integrated on each key



The status of the battery in charge is indicated by the dedicated bicolor led

**PUSHBUTTON STATUS LED**  
Radio communication status, diagnose and emergency stop button feedback

**BICOLOR STATUS LED**  
Custom application use

**CUSTOMIZABLE GRAPHIC**  
Pictograms, colors and company logo

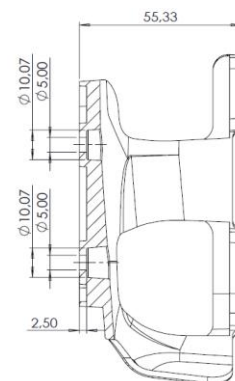
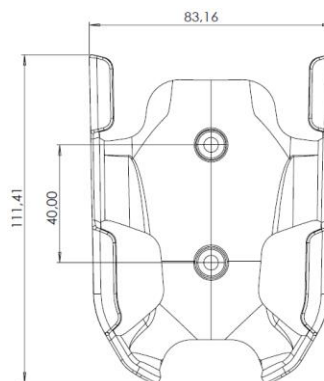


ALNW.D

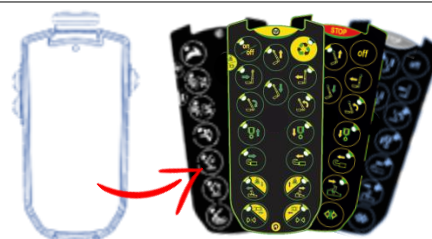
DIGITAL RADIO PUSHBUTTON

## FEATURES

### MOUNTING BRACKET



### CUSTOMIZABLE KEYBOARD GRAPHIC



## OPTIONAL

### INTEGRATED MAGNETIC BRACKET



### FAUX LEATHER CASE

With rear spring clips for belt attachment and lid with Velcro closure for quick withdrawal.



### BATTERY CHARGER with spiral cable included

For lighter socket (12/24 VDC)

#### OPTIONAL:

- 220/230 VAC plug adapter
- **New** USB TYPE C (5 VDC)



Lighter  
Socket charger  
included



OPTIONAL:  
USB TYPE-C  
connector

### RADIO KIT READY TO USE

See the dedicated datasheet on [almec.net](http://almec.net)



**ALNWR**  
RADIO TRANSMITTER



**RDC EVO**  
RADIO RECEIVER



NOTE